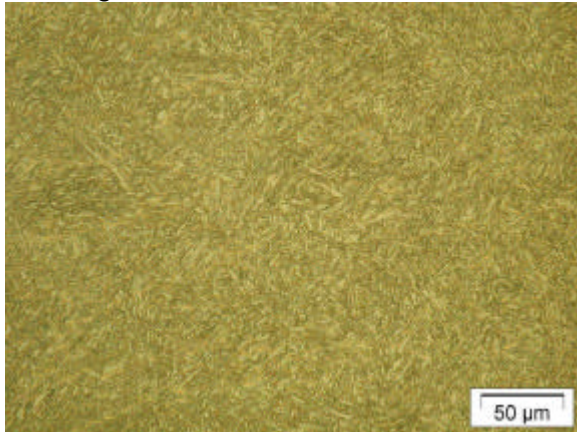
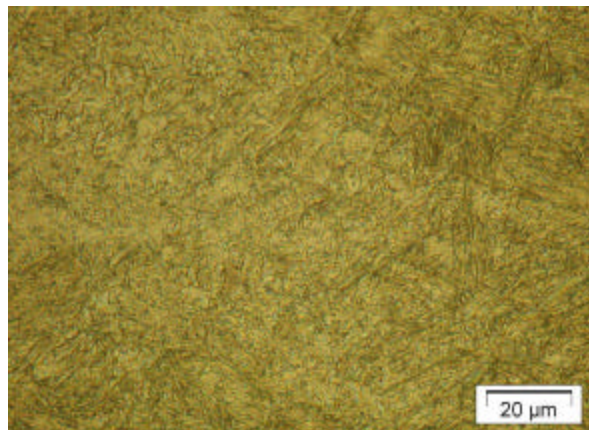
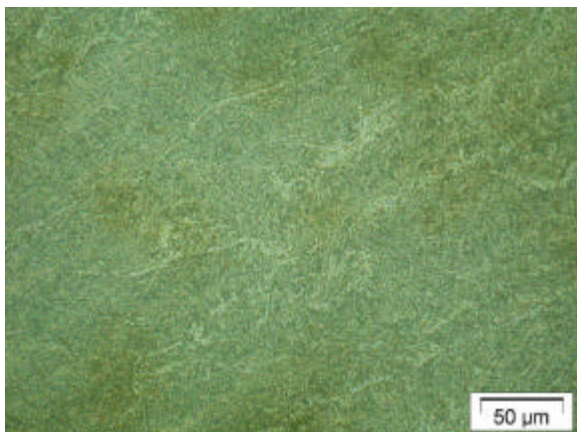
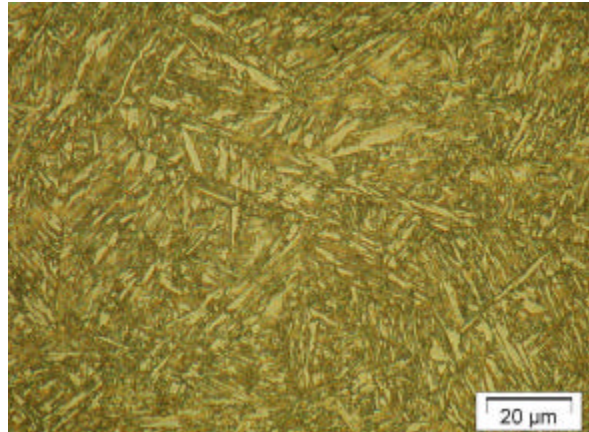


Decklage

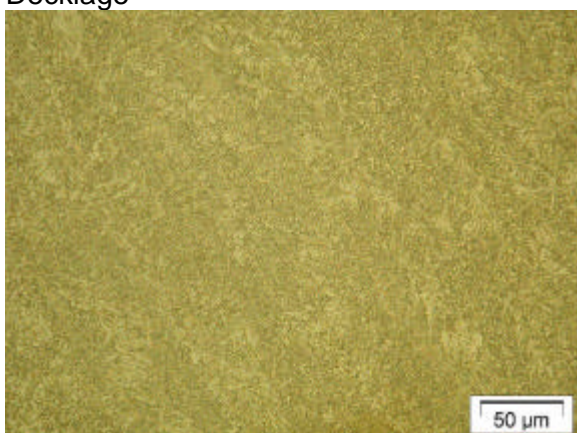
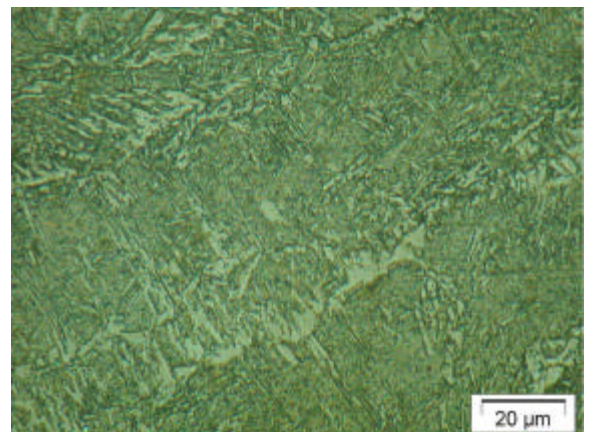


Fülllage

a)



Decklage



Fülllage

b)

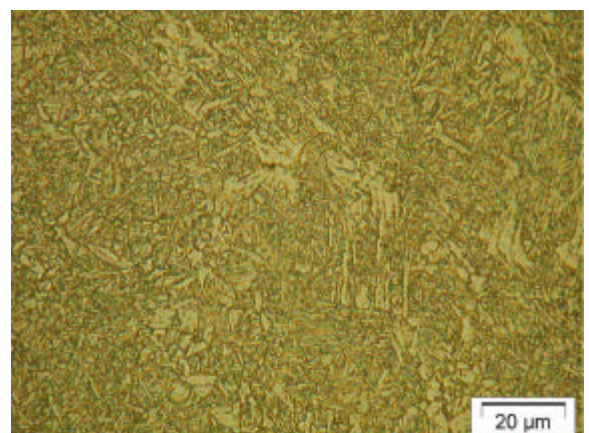
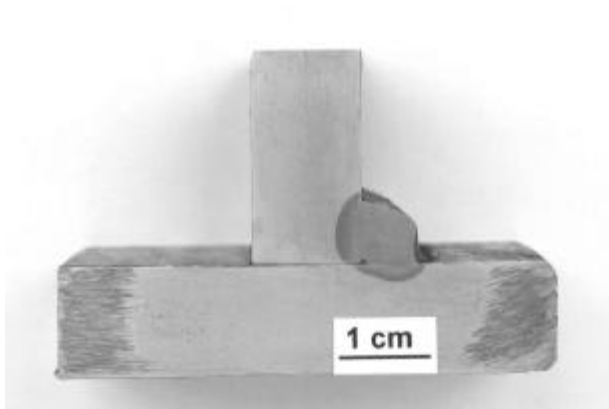
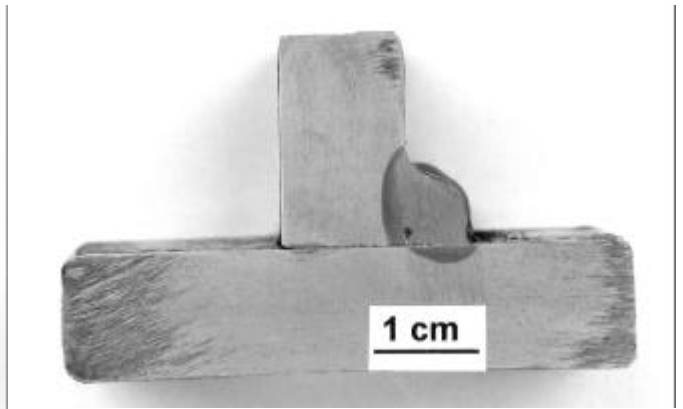


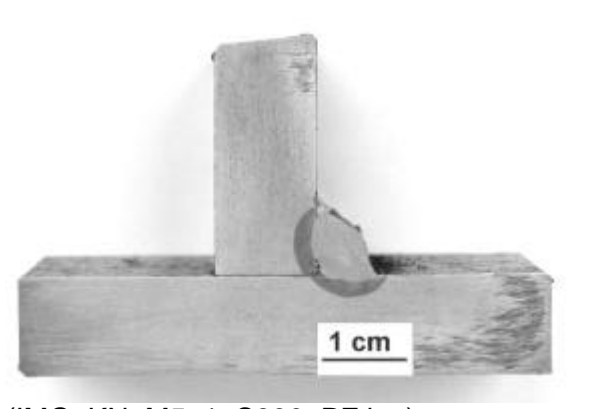
Bild 6.7: Gefüge des reinen Schweißgutes, dargestellt am Beispiel der Versuchsschmelze a) B1 und b) 1M



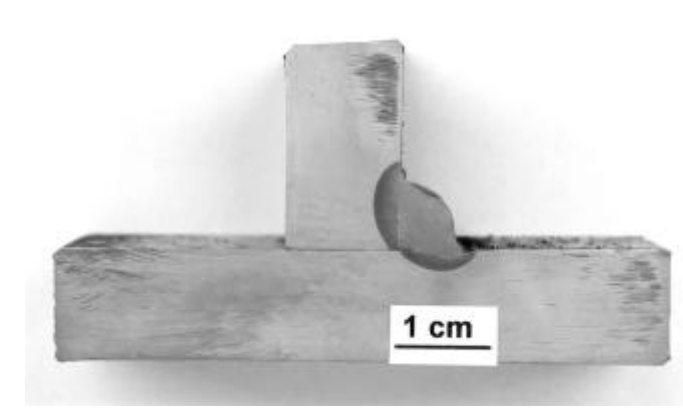
(WERFT_KN_M5_1_S890_PF.jpg)



(WERFT_KN_M5_2_S890_PF.jpg)

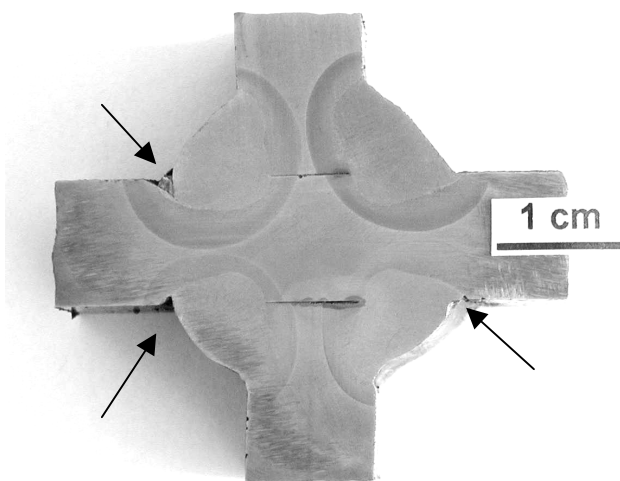


(IMG_KN_M5_1_S890_PF.jpg)

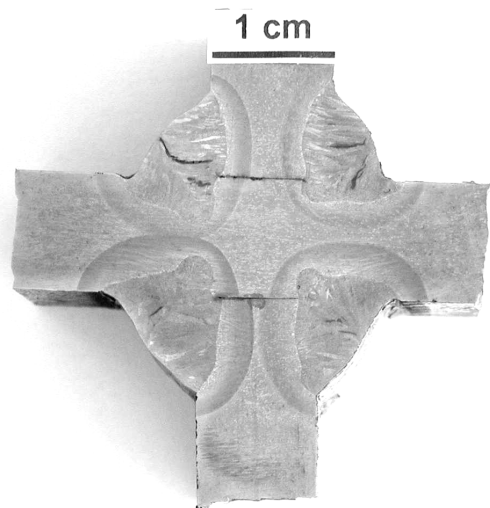


(IMG_KN_M5_2_S890_PF.jpg)

Bild 7.5: Schweißungen mit ungenügender Durchschweißung bei Kehlnahtproben

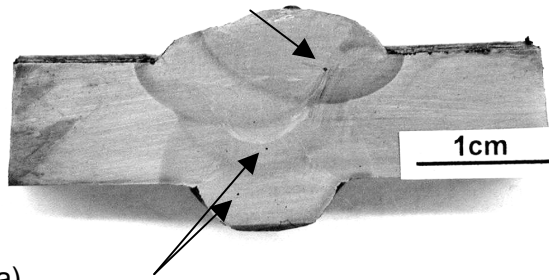


(a)
(KIROW_KrP_S1100_B1_PBbearb.jpg)

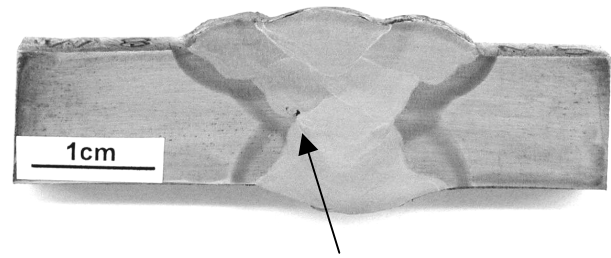


(b)
KIROW_KrP_S1100_M8_PB_bearb.jpg)

Bild 7.6: Schweißungen mit (a) Einbrandkerben und (b) Rissen an Kreuzproben



(a)
(UNI_SN_B1_S1100_PAbea.jpg)



(b)
(WERFT_SN_M5_S890_PAbea.jpg)

Bild 7.7: Schweißungen mit (a) Poren und (b) einem Bindefehler in einer Stumpfnah